

THIS INSTRUMENT WAS PREPARED BY:
LONDON M. CROSS OF
CARNAHAN-PROCTOR AND ASSOCIATES, INC.
CONSULTING ENGINEERS
 SURVEYORS ENGINEERS PLANNERS
 6191 WEST ATLANTIC BLVD., MARGATE, FLORIDA 33063
 JANUARY 1993 870610R DCD

(RIVIERA P.U.D.)

BOCA CHASE TRACT 4

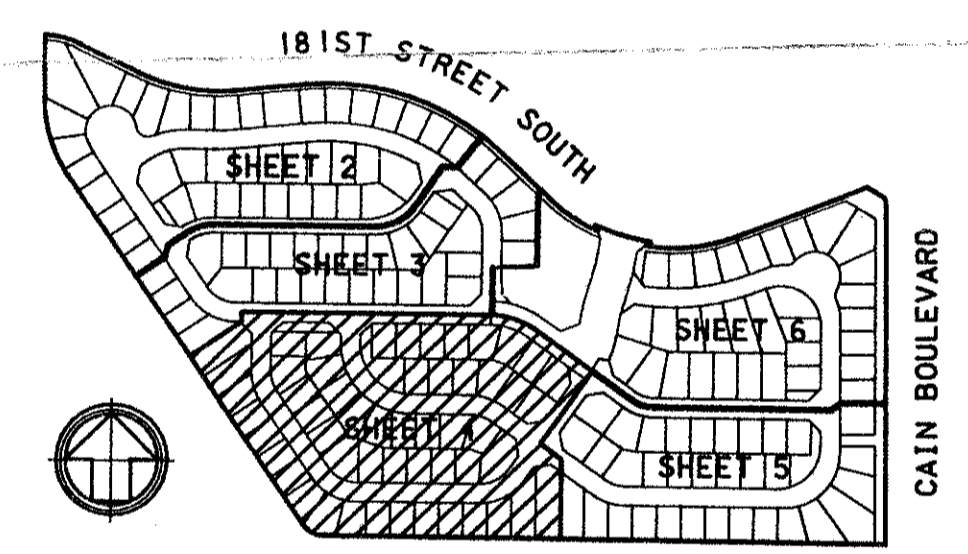
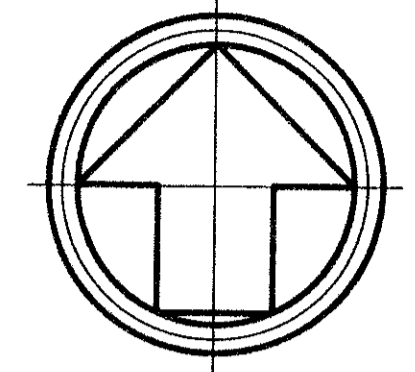
A REPLAT OF PORTION OF TRACTS 10-12, 20-23, 27-29 AND THE ADJACENT RIGHT-OF-WAYS
 IN SECTION 1, TOWNSHIP 47 SOUTH, RANGE 41 EAST, "FLORIDA FRUIT LANDS COMPANY'S
 SUBDIVISION NO. 2" (P.B.1, PG.102, P.B.C.R.) AND PORTIONS OF TRACT "C", "WATERBERRY"
 (P.B.43, PGS.161-163, P.B.C.R.), PALM BEACH COUNTY, FLORIDA

SEE SHEET 3 OF 6

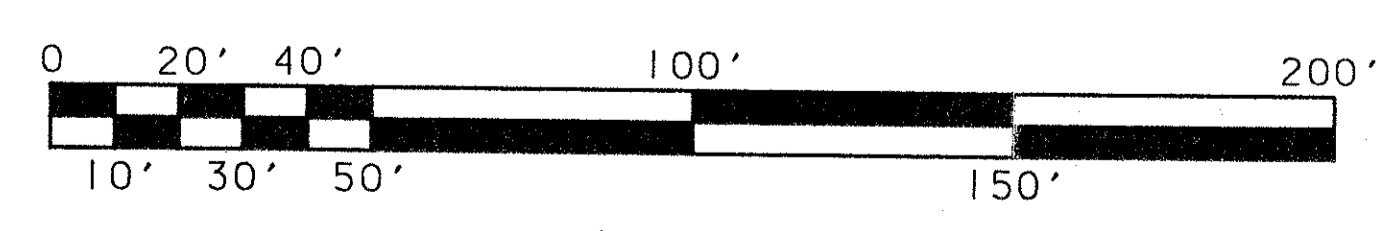
303-018

147

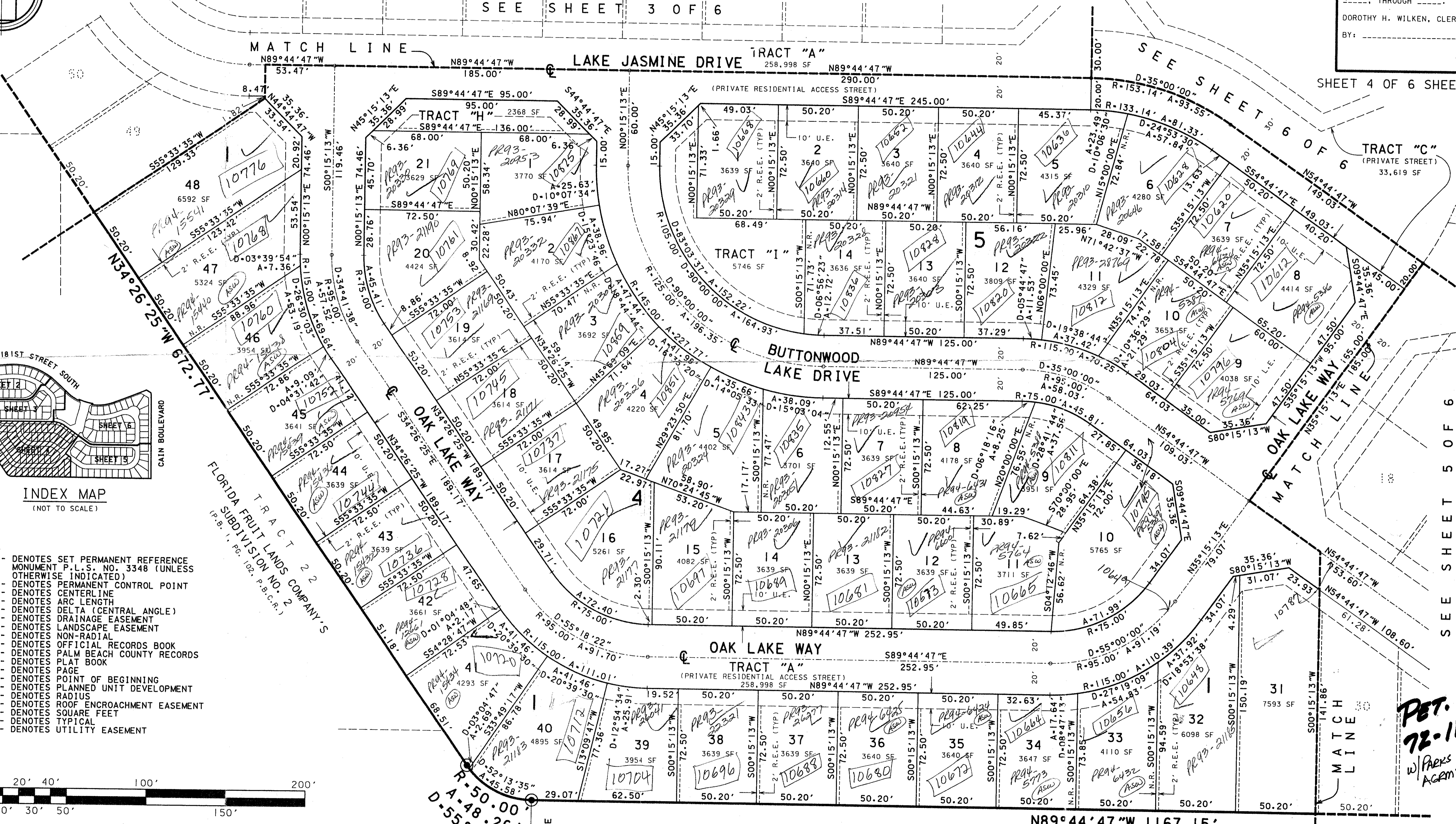
STATE OF FLORIDA
 COUNTY OF PALM BEACH
 THIS PLAT WAS FILED FOR
 RECORD AT
 THIS DAY OF
 A.D., 1993, AND DULY RECORDED
 IN PLAT BOOK ON PAGES
 THROUGH
 DOROTHY H. WILKEN, CLERK
 BY: _____ DC



- LEGEND:**
- DENOTES SET PERMANENT REFERENCE MONUMENT P.L.S. NO. 3348 (UNLESS OTHERWISE INDICATED)
 - DENOTES PERMANENT CONTROL POINT
 - DENOTES CENTERLINE
 - DENOTES ARC LENGTH
 - DENOTES DELTA (CENTRAL ANGLE)
 - DENOTES DRAINAGE EASEMENT
 - DENOTES LANDSCAPE EASEMENT
 - DENOTES NON-RADIAL
 - DENOTES OFFICIAL RECORDS BOOK
 - DENOTES PALM BEACH COUNTY RECORDS
 - DENOTES PLAT BOOK
 - DENOTES PART
 - DENOTES POINT OF BEGINNING
 - DENOTES PLANNED UNIT DEVELOPMENT
 - DENOTES RADIUS
 - DENOTES ROOF ENCROACHMENT EASEMENT
 - DENOTES SQUARE FEET
 - DENOTES TYPICAL
 - DENOTES UTILITY EASEMENT



W 1/4 CORNER SECTION 1-47-41
 S. LINE NW 1/4 SECTION 1-47-41
 S89°44'48"E 1610.20'



SHEET 4 OF 6 SHEETS

SEE SHEET 5 OF 6

PET.
 72-118B
 w/PAERS ESCROW
 AGENT

TRACT 23
 FLORIDA FRUIT LANDS COMPANY'S SUBDIVISION NO. 2
 (P.B. 1, PG. 102, P.B.C.R.)

Boca Chase Tract 4

0303-018

70/147